

EZMira User Manual

for Windows

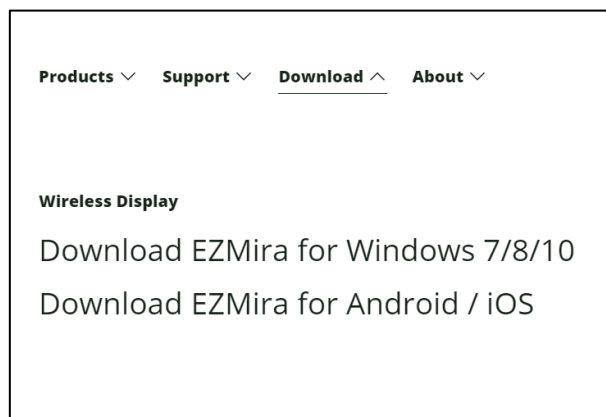
MiraScreen Manual for Windows User

Please refer to the following section and finish your MiraScreen's Setting. You may finish the setting procedures with a few clicks.

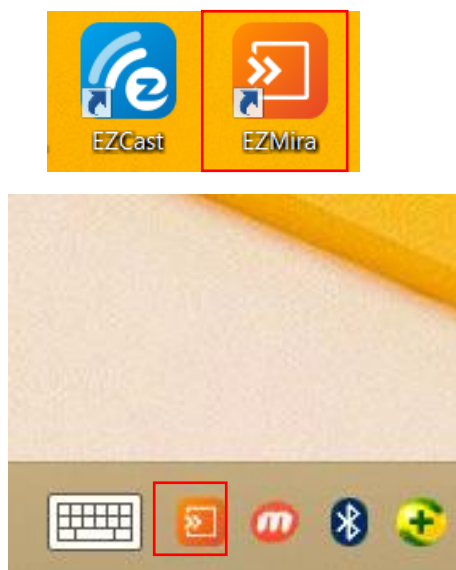
Connecting to MiraScreen via Wi-Fi Setting

Follow the below steps to pair your Windows Laptop with MiraScreen.

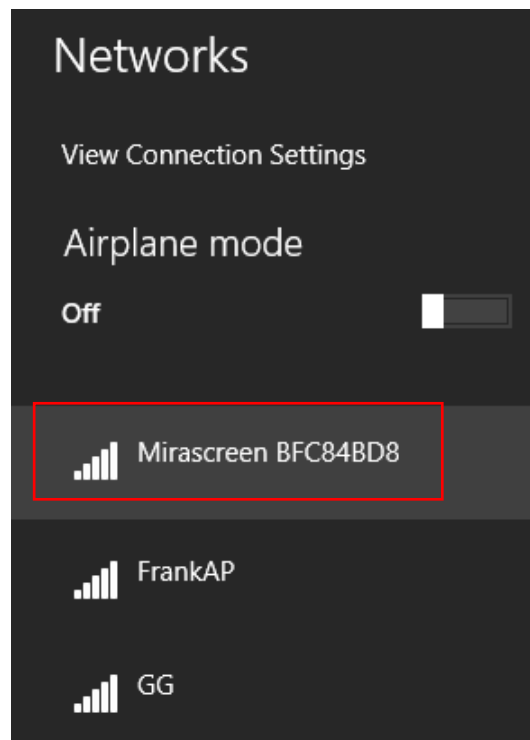
1. Download EZMira for Windows from Mirascreen.com. Then follow the installation instructions.



2. Activating the App by clicking EZMira icon. Then user may see the EZMira icon at the bottom right of the desktop.

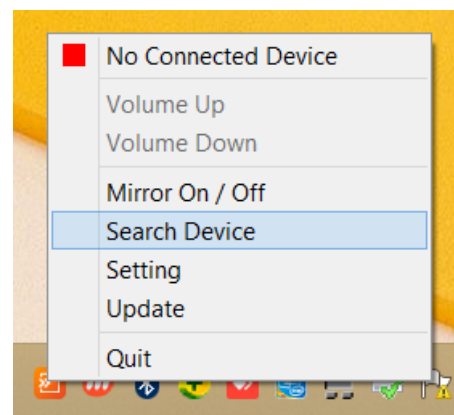


3. Find matching SSID of MiraScreen in your Windows Laptop's Wi-Fi List.

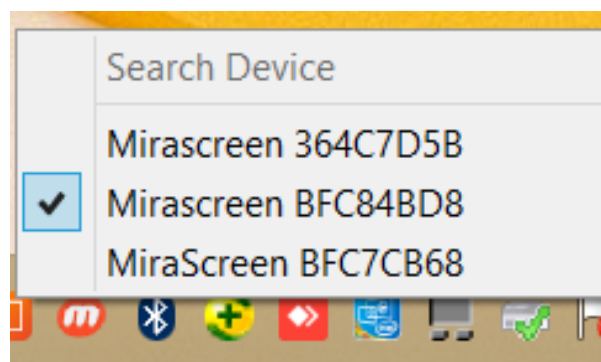


4. By clicking "Search Device", you may see the MiraScreen's SSID.

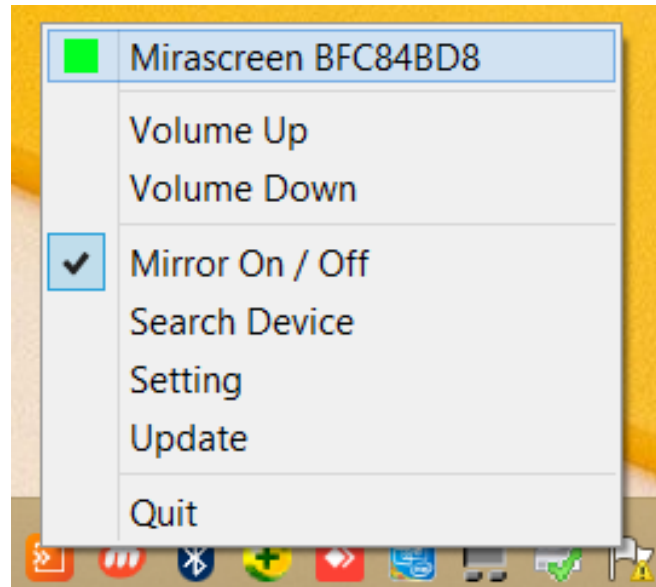
- i. Click "Search Device".



- ii. Find matching SSID.

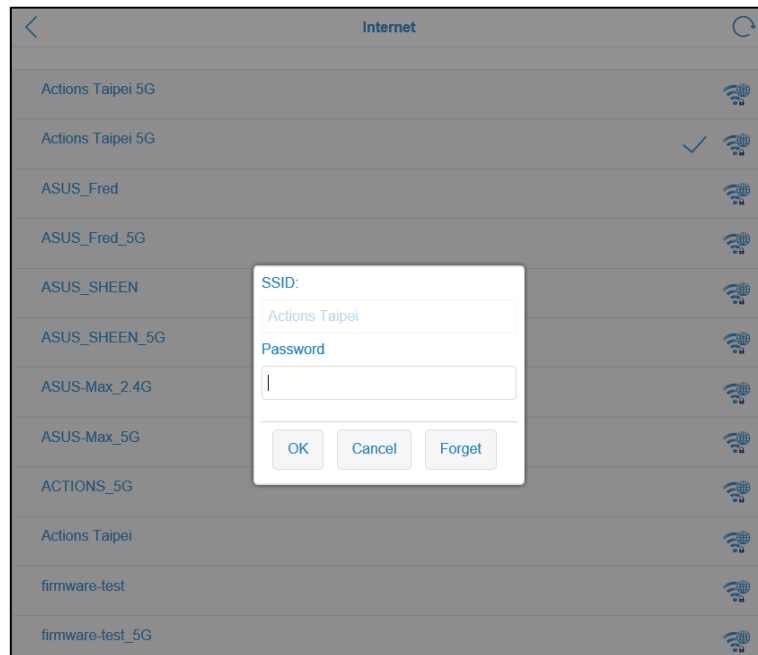


5. Once connected, you may see the green light, which is MiraScreen's SSID. You may start casting by clicking Mirror On.



Connecting your MiraScreen to Wi-Fi

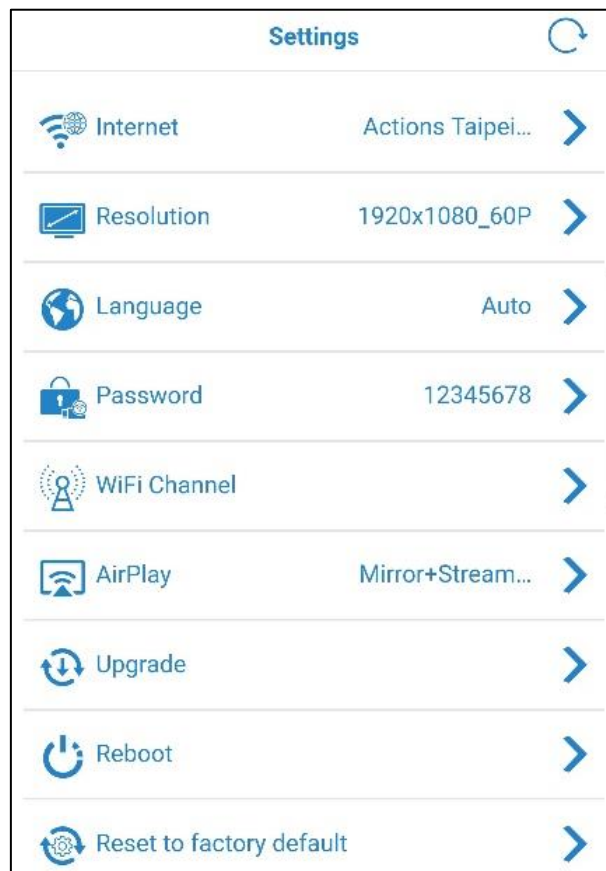
Click “Setting”, then EZMira will direct to your browser. When entering “Internet” section, you may connect to the preferred Wi-Fi by entering Wi-Fi password.



Setting up your MiraScreen

By clicking “Setting”, user may do custom configuration for your MiraScreen, including Internet, Resolution, Language, Wi-Fi Channel, Firmware Upgrade, Reboot, etc.

To provide better using experience, MiraScreen allows user upgrading firmware via OTA.



Updating EZMira App

By clicking “Update” in EZMira’s list, user can download the latest version of EZMira. To enjoy new function provided by EZMira, please make sure the App is up to date.

